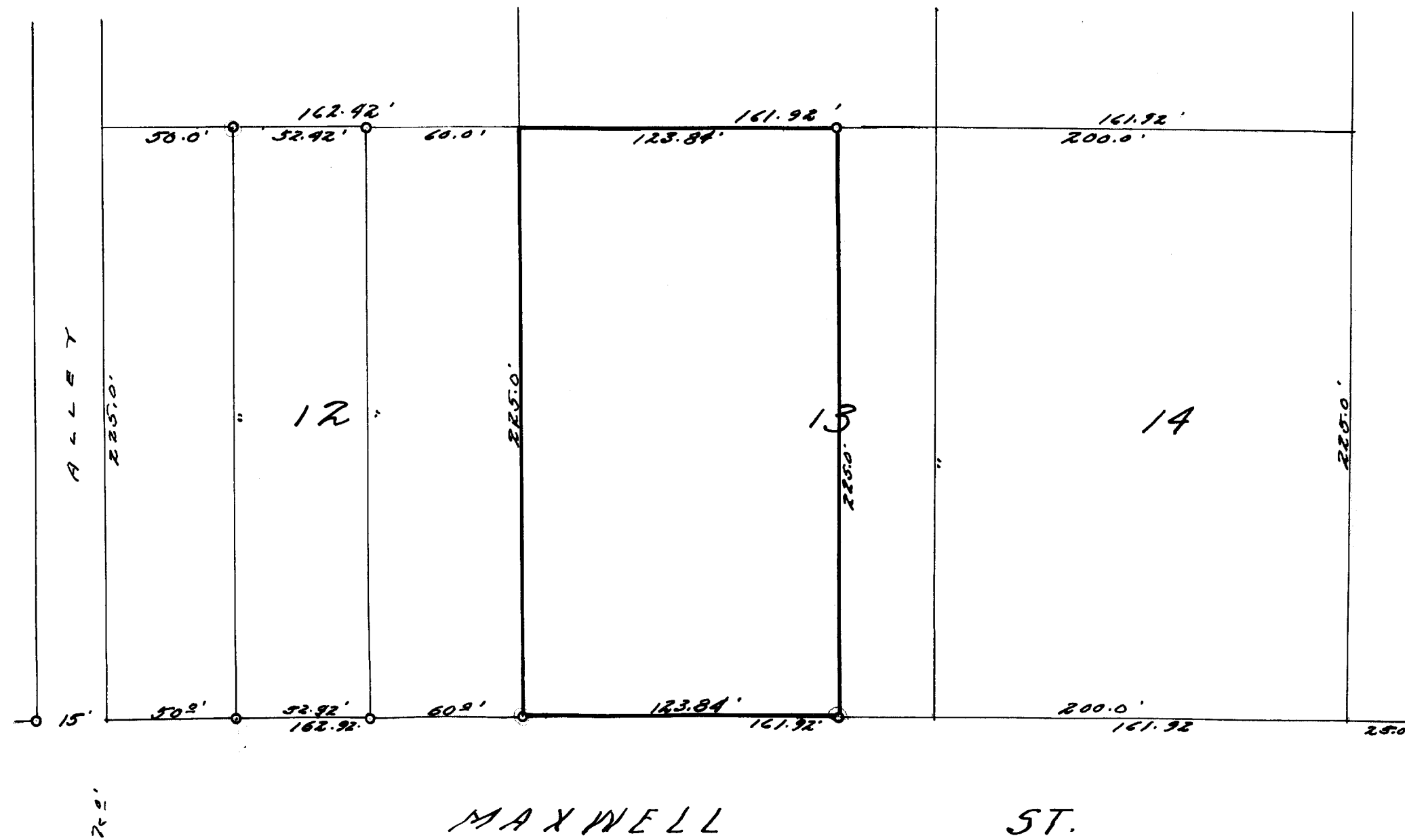


53-25



DESCRIPTION:

The E. 1/2 of Lots 13 & 14, Columbian Second Subdivision of a portion of the Village (now city) of Lake Geneva Walworth County, Wisconsin, excepting the north 200 feet thereof.

CERTIFICATE:

I, hereby certify that I have on this the 28th day of July 1953, surveyed the above described property and find that no encroachments exist.  
SIGNED AND SEALED THIS 4 TH DAY OF AUGUST 1953.

Joseph M. Biagi, Professional Engineer  
Elkhorn Wisconsin.

CL 2-12

7-24B